



Welcome to this issue of ON TRACK

In this issue:-

- Message from the Editor
- AutoTrack for AutoCAD 2009
- 64-bit comes of age
- Training News
- The wind of change?
- Tips and Tricks: AutoTrack for Highway Design
- And finally...

In future ON TRACK will be emailed to all on our mailing list. If you'd like to add your name then go to www.savoy.co.uk/maillist.php.

Message from the Editor

You may recall that this time last year I had just returned from Switzerland and was bemoaning the bad snow. Well, I'm sure you'll be pleased to know, this year was much better and ended with heavy snowfalls which had us snowboarding in half a metre of powder for the last two weeks of the season. You can imagine how glad I was to get back to the office!

AutoTrack for AutoCAD 2009



AutoCAD 2009

Around this time of year we usually see a new version of AutoCAD, and this year was no exception. AutoCAD 2009 was released on 25th March 2008. We have been working closely with Autodesk to develop a compatible version and are pleased to say that AutoTrack v8.02 was posted on our website on 16th April 2008. The new version of AutoTrack is natively compatible with both the 32-bit and the 64-bit version of AutoCAD 2009 as well as all the verticals. If you're considering upgrading to a 64-bit operating system (see below) AutoTrack v8.02 is still the only turn simulation program available in a 64-bit version.

64-bit comes of age

AutoCAD 2009 is Autodesk's second fully 64-bit version having launched it with 2008. The advantages we have noticed are that the 64-bit version appears to run up to 30% faster and can handle much larger drawings, more XREF's and bigger areas of OS mapping. This is partly due to increased processor throughput and partly because the 64-bit data size allows programs to address far more (almost limitless in fact) virtual and physical memory than the 3.3GB limit imposed by 32-bit processing. If you are working on big AutoCAD Map datasets or with large OS background mapping the 64-bit version will bring big benefits. AutoCAD 64-bit drawings are no different, with the one exception that they can be larger...a lot larger...as the approx 10mb max drawing size limit on the 32-bit version does not apply!



Ever since we were invited onto the 64-bit alpha test team, nearly two years ago, we have worked closely with Autodesk as one of a handful of early adoption developers on their 64-bit platform. This privileged position allowed us to demonstrate our commitment to 64-bit by showing AutoTrack 8 for 64-bit AutoCAD 2008 at Traffex 2007. That commitment continues with AutoTrack 8.02 for AutoCAD 2009.

Training News

With the continuing success of our formal Essential and Advanced AutoTrack training courses we have been wondering how else we may be able to help our customers to get the best out of AutoTrack. We are considering running short update/refresher courses. These courses would take the form of a presentation, i.e. there would be no hands-on practice, and would cover the new features in the latest major version, include a reminder of the other main features and end with a question and answer session. They may be run at our office or at other convenient locations.

We'll keep you informed as our thoughts crystallise but we'd love to hear what you think, so please drop us an email if you would be interested in such a course.

In the meantime, if you'd like to book a place on one of our existing training courses please contact us on 01580 720011 or email us sales@savoy.co.uk.

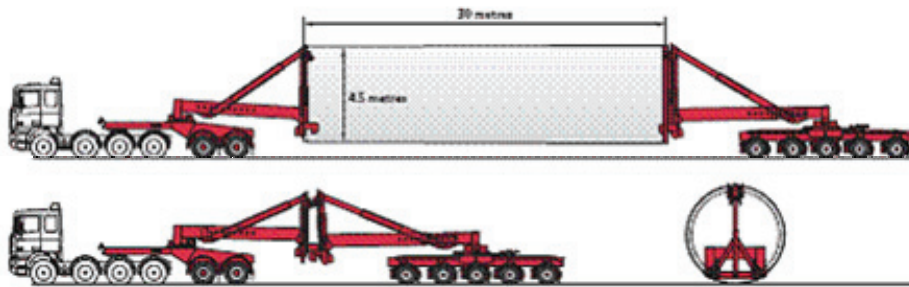
" Very useful & well presented
- Good course all round -
Thank you"

Level 2 course delegate

The wind of change ?

Very much in the news these days, wind farms are widely viewed as capable of making a valuable contribution to our energy needs with no harmful side-effects, other than being rather unsightly. According to the British Wind Energy Association (www.bwea.com) there are currently 1972 wind turbines in 171 farms around the UK producing a total of around 2500MW of energy. In addition there are some 36 new UK wind farms comprising 600 turbines currently under construction.

When the outsize components of these turbines need to be transported by road they require some rather large vehicles; vehicles like the MEGA Wind Turbine transporter used by R Collett & Sons (www.collett.co.uk).



Collett's MEGA Wind Turbine Transporter



Turbine tower in transit



Turbine blade in transit

AutoTrack can model this vehicle but more and more people are contacting us with a need to model similar wind farm component transporters. If you are one of those who will need to model these large vehicles this is the situation; AutoTrack can model this and similar vehicles with trailer rear steering subject to the secondary steering being linked to the articulation angle. Each axle group can have up to 20 (yes, twenty) axles.

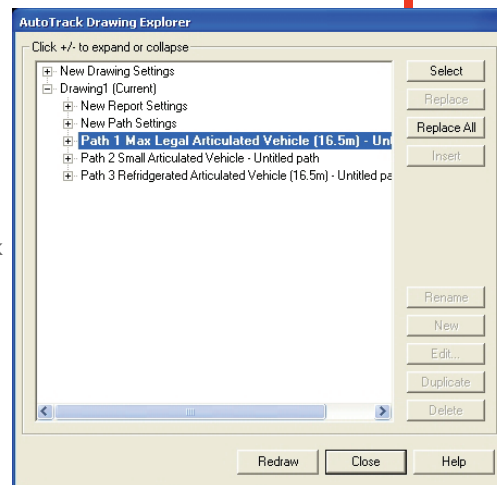
If you have any questions about modelling these monster vehicles please email us at support@savoy.co.uk or phone 01580 720011.

Tips and Tricks

AutoTrack for Highway Design: Update all paths in a drawing simultaneously

If you create several paths on a project it's often necessary to change the presentation format of all these paths. You can use the Drawing Explorer to do this..

1. Edit the report settings for one of the paths using the Report Wizard and make a note of the path name or ID.
2. Select **Drawing Explorer** from the AutoTrack drop down or click on the **Drawing Explorer** button.
3. Expand the current drawing if necessary and highlight the path whose settings you wish to duplicate.
4. Click the **Replace All** button to copy the selected reports settings to the other paths in the drawing. If you only want to change some reports then select the path and click the **Replace** button instead.
5. Click on the **Redraw** button to see the effect of your changes.



And finally...

A streetscape that was obviously designed by a non-cyclist !



autodesk
authorised developer



www.savoy.co.uk

SAVOY



**COMPUTING
SERVICES LTD**

Savoy Computing
Services Ltd
Clermont House
High Street
Cranbrook
Kent, TN17 3DN
England

T: +44(0)1580 720 011
F: +44(0)1580 720 022
E: sales@savoy.co.uk
W: www.savoy.co.uk
US: 1-866 527 3790