

## Welcome to this issue of ON TRACK

In this issue:-

- Message from the Editor
- Fully independent secondary steering
- AutoTrack pay as you go!
- AU 2009 Preview
- AutoTrack...Civil 3D's 4th dimension!
- New Italian & Portuguese versions
- Online library gremlins ironed out
- Tips and Tricks: AutoTrack for Highway Design
- And finally....

In future ON TRACK will be emailed to all on our mailing list. If you'd like to add your name then go to [www.savoy.co.uk/maillist.php](http://www.savoy.co.uk/maillist.php).

### Message from the Editor

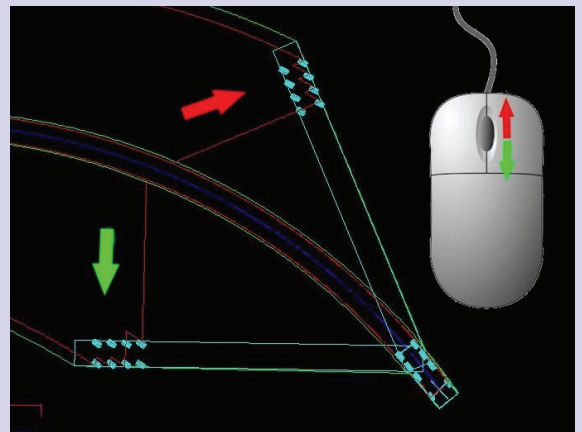
It's all go! No sooner have we got one version out than we have to start work on the next. In fact, that's not quite right; we're usually working on the next release *before* the current one is available. Either way, it's non-stop. That said, it's nonetheless fun to deliver features that people appreciate. A good example is the new fully independent secondary steering in v8.75 which has received rave reviews from some of our regular customers...more below. We've got more great features planned which you'll find out about over the coming months and the important thing for us is that you like them :-)

### Fully Independent Secondary Steering

The big new feature in v8.75 has to be the fully independent secondary steering. This amazing new feature allows you to control two independently steered axles just as easily as one. Coupled with the enhanced Dynamic Editing, which now allows you to edit every aspect of a path using grips, it represents a major step forward in the analysis of large vehicle movements.

The primary axle is controlled normally using the point and click AutoDrive interface and the secondary steered axle is controlled by adjusting the mouse wheel. It really is an elegant solution to a complex problem.

See the [press release](#).

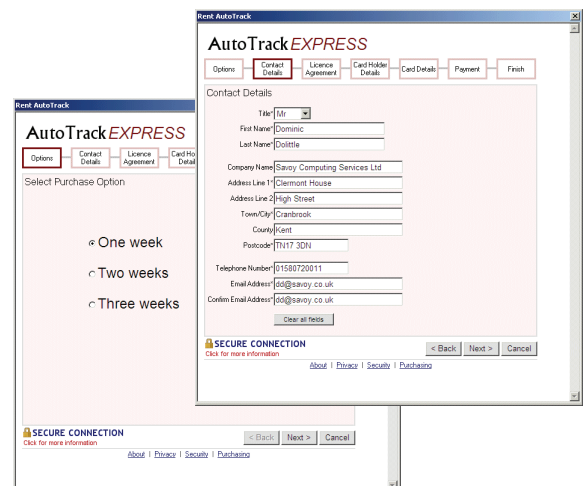


### AutoTrack pay as you go!

We often come across comments along the lines of "I'd like to use AutoTrack but I wouldn't use it often enough to justify buying a copy". It's also the case that many companies have frozen their capital expenditure budgets during the economic downturn. Despite this, projects still have to get completed and planners still want work checked using swept path analysis. We think we have a solution...the AutoTrack EXPRESS rental store.

Now you can rent the latest version of AutoTrack in weekly periods. You can use the software as much as you like within the rental period. The licence can be moved between computers and if you run out of time you can extend the rental period at a discounted rate. If, during the rental period, you decide that, actually, you really do need your own copy of AutoTrack, we will credit the entire rental period against the cost of a full copy - and you can't say fairer than that!

The rental licence now offers users a way to complete their necessary work on a pay per use basis. For more information and how to use go to [www.savoy.co.uk/purchasing.htm](http://www.savoy.co.uk/purchasing.htm).



## AU 2009 Preview

We're gearing up to head out to Vegas again for AU 2009. This time, we're proud to say, AutoTrack will be featured in the Civil 3D showcase presentation so look out for us there. We also hope very much to have representatives from our US Partner, Ourston Traffic Solutions, on our stand where will be showing AutoTrack for Roundabout Design.

The conference is on at the Mandalay Bay Resort and Convention Centre between 1-3 December.

Come and see us on stand 109 to see our new AutoTrack for Roundabout Design.



## AutoTrack...Civil 3D's 4th Dimension!

On 28th October Savoy have been invited, by Autodesk's Jack Strongtharm, to show AutoTrack at the UK Civil 3D User Group meeting at the Autodesk offices in Farnborough, Hampshire, UK. If all goes to plan we will be unveiling some rather nice new features for Civil 3D users.

## Autodesk® Preferred Industry Partner AutoCAD® Civil 3D®

Earlier this year Savoy became an Autodesk **Preferred Industry Partner** on the Civil 3D platform in Europe and these new features are all part of our on-going commitment to develop sector specific features that both enhance and simplify the user experience on this platform.

If you'd like to come along then please contact Autodesk via their website or click [here](#) to register.

Now available in:-  
English  
US English  
French  
Spanish  
German  
Italian  
Portuguese

### New Italian & Portuguese versions



Benvenuti ai nostri amici italiani.  
AutoTrack è ora disponibile in italiano.



Boas vindas aos nossos amigos  
Portugueses. AutoTrack está agora  
disponível em Português.

\*Those that need to know will understand!

## Online library gremlins ironed out

We are aware that some of our users have had problems accessing the online vehicle libraries that we launched in version v8.52. Many of these were due to the use of proxy servers.

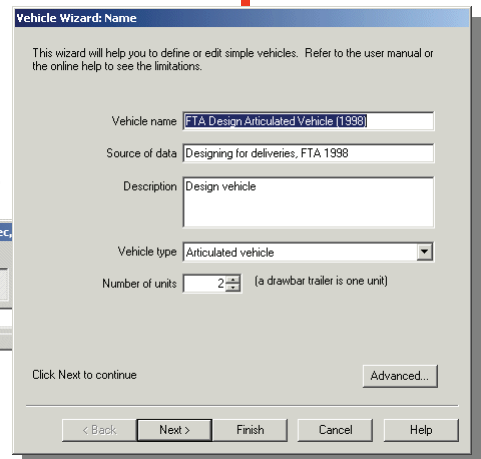
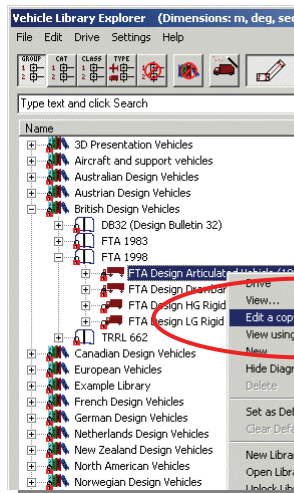
Well, we think we've sorted them out and now you can specify proxy server details during Setup or when running AutoTrack. Do please try again and let us know if you are still having problems.

## Tips & Tricks

### AutoTrack for Highway Design: Recycling vehicles!

It's amazing how many people don't realise firstly, that you can create your own vehicles in AutoTrack and secondly that you can reuse parts of existing vehicles. The wizard lets you build vehicles from scratch very quickly but often it's only one or two dimensions that change or an axle that's added. In these cases it's really easy to base the new vehicle on an existing one.

1. Open the Vehicle Library Explorer.
2. Find the vehicle that is closest to the one you want to create and highlight it with the cursor.
3. Right click and select **Edit a Copy** from the context menu.
4. When the Vehicle Wizard appears change the vehicle name and then click **Next** to step through the wizard until you find the dimension or value you need to change.
5. The vehicle diagram will show the effect of your change immediately.
6. When you've made all your changes simply click **Finish**.
7. Easy when you know how!



## And finally...



Nice parking!

The driver certainly looks very nonchalant, almost as if he's saying "I meant to do that".



COMPUTING  
SERVICES LTD

Savoy Computing  
Services Ltd  
Clermont House  
High Street  
Cranbrook  
Kent, TN17 3DN  
England

T: +44(0)1580 720 011  
F: +44(0)1580 720 022  
E: sales@savoy.co.uk  
W: www.savoy.co.uk  
US: 1-866 527 3790

Autodesk®  
Authorized Developer

[www.savoy.co.uk](http://www.savoy.co.uk)

