



autotrack
designs for movement

AutoTrack Parking

Parking Layout Design

Lay out vehicle parking areas in minutes instead of hours!

Built-in parking standards and tools to place rows and cut access routes in a quick and controllable way takes the tedium out of experimenting with alternative layouts.

► Place rows quickly & accurately

AutoTrack Parking Layout Tools give you the tools you need to place and edit layouts quickly.

► Freehand row placement

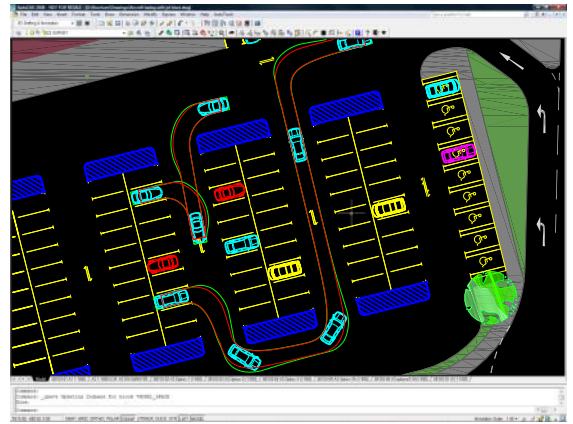
Place single or double sided rows of bays against or between existing objects or alignments using object snap. Adjust both the row and bay attributes as you place the row.

► Parallel row placement

Place rows of bays parallel to existing objects or to previously placed rows. The ends of the repeated rows take their alignment from the existing row so if the site tapers, the rows automatically shorten or lengthen accordingly.

► Intelligent row joins

AutoTrack can **intelligently join rows** of bays no matter how they lie relative to one another. The base row (the first one selected) is automatically extended (or truncated) to meet the row to be joined. Quick, easy and intuitive.



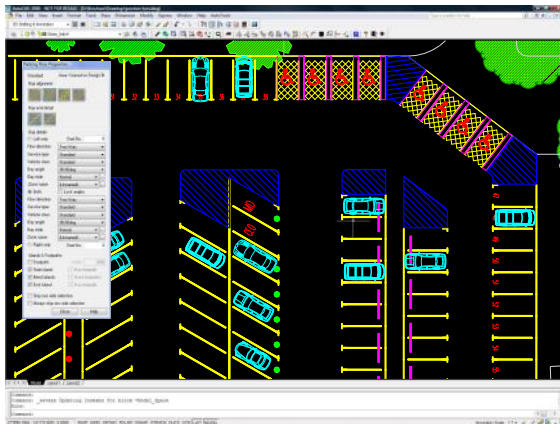
Check access using AutoTrack for Highway Design

► Local, national or user defined standards

International parking standards are supplied with AutoTrack. These may be used 'as is' or customised to suit local or client specific requirements. Once defined, AutoTrack ensures that all parking bays placed comply with the requirements of the selected standard. Bay dimensions are defined by vehicle class, service type and bay angle - all user customisable.

► Create custom bay types

Pre-defined bay types (according to standard) for disabled, parent and child, cycles, pushchairs & trolleys. Use drill-down dialogs to quickly create new bay types, each with their own bay markings, safety zone, optional symbol (from the built-in list), and text. Add parking furniture including wheel stops, safety barriers, privacy posts and/or parking meters. All may have size, location, colour, line type and line weight specified.



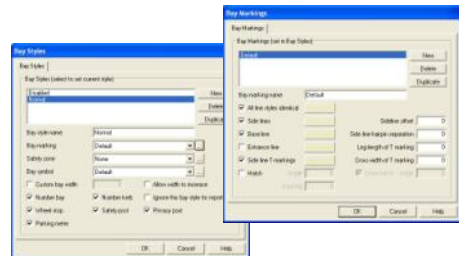
Just some of the possible parking bay configurations

► Caters for any parking configuration

Choose from single or double sided rows, aligned or non-aligned bays, laid out in perpendicular, angled or herringbone format; even roadside parking parallel to the kerb. The bay angle is automatically calculated based upon flow direction and driving convention and automatically updates if you change the flow direction.

► Pedestrian access

Add pedestrian access routes down the centre of rows and optionally across end and bend islands. AutoTrack automatically adjusts the bay configuration if a pedestrian centre path is added or removed.



Customise bay styles

► Construction guide lines

Use construction lines to see the areas around bays and rows that must be kept clear according to the standard. AutoTrack is clever enough to ensure that parallel rows are not placed closer than these lines dictate.

► Automatic bay numbering

Bay numbering, kerbside or in-bay, is automatic. Size, colour and orientation of the numerals fully customisable.

AutoTrack Roads

Parking Layout Design



"AutoTrack is an extremely useful, quick to learn and understand software package."

Andrew McCulloch
Arup

► Make changes dynamically

It's really easy to edit rows, bays and islands using grips, simply select the row and adjust the relevant grip.

► Move, extend or realign rows

Select and move the intermediate grip to insert a change of direction, with or without an island. Grips at each end of a row let you extend the row on the original alignment or extend it in another direction by adding another vertex.

► Adjust bay and island angles

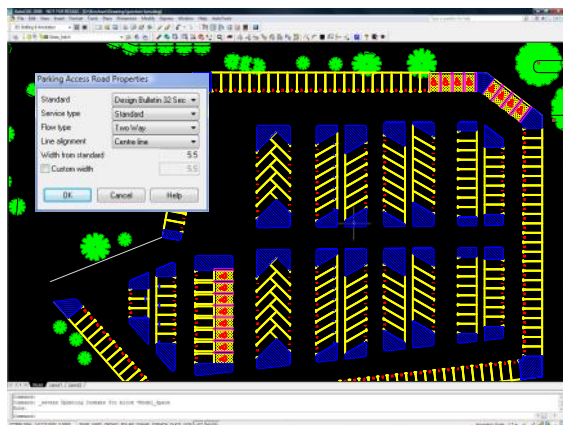
Toggle between valid bay angles using the bay angle grip. Grips are also provided to adjust the angles of the end islands, either independently of each other or in unison. If you'd rather set these angles in a dialog, you can.

► Edit bay or island detail

Edit bays individually or by row. AutoTrack 'remembers' any individual bays and maintains them even when you move the row or change the row bay type. Managing bay types in this way allows you to make global changes very quickly. AutoTrack automatically places correctly sized islands at the ends of each row and at each change of direction. The shape of the end islands can be adjusted where they meet circulation routes to reflect the angle of the road. If you're placing bays between existing islands then simply switch all or selected islands off. You can even let AutoTrack calculate the size of the island but not draw it so you can add the island details yourself.

► Place access roads fast

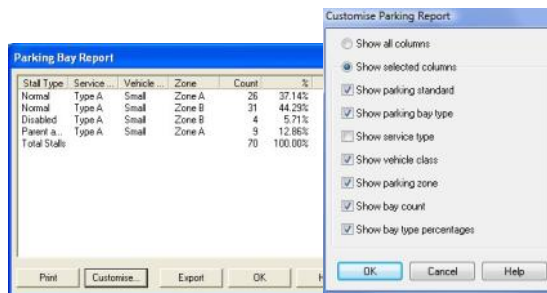
No need for tedious preparatory work, simply cut straight or dog-legged, one or two way access roads through any number of rows of bays in a single operation. The cut rows are trimmed and have correctly sized islands calculated and added automatically. Undo is fully supported.



Fully automatic access road generation

► Dynamic bay counting ('head-up' display)

AutoTrack's **Parking Bay Report** keeps a close eye on the number of bays as each row is placed and the totals are displayed and updated dynamically. You can display any combination of parking standard, bay type, service type, vehicle class and/or parking zone.



'Head-up' display of bays

These figures are also displayed as percentages of the total making it really easy to track accessibility requirements. It's even customisable so if you don't need to monitor service type just switch it off.

► Compatible, Comprehensive, Portable

You won't find a more compatible product. AutoTrack is provided with support for nine generations of AutoCAD from **AutoCAD R14 to 64-bit AutoCAD 2012** and ten generations of **MicroStation from 95 to V8i**. Uniquely, it also runs on **MicroStation PowerDraft v7.0 to V8i** and **MicroStation MX Roads XM and V8i**, and we even give you a free stand-alone version that runs in Windows. The stand-alone version reads and writes DXF format files so you can use other CAD systems such as **AutoCAD LT**.

► Sharing & archiving has never been easier

All AutoTrack data is stored in the host drawing making it really easy to share with colleagues. As for archiving, there's no more risk of forgetting to archive important supplemental files because there aren't any! And if you use AutoTrack on two CAD systems the Export / Import options let you move the data between them with no fuss.

Available in:
English
US English
French
Spanish
German
Italian
Portuguese

Autodesk
Preferred Industry Partner
AutoCAD® Civil 3D™



savoy
computing

Savoy Computing
Services Ltd
Clermont House
High Street
Cranbrook
Kent, TN17 3DN
UK

T: +44(0)1580 720 011
F: +44(0)1580 720 022
E: sales@savoy.co.uk
W: www.savoy.co.uk
US: +1 866 527 3790

Autodesk
Authorized Developer

