



autotrack  
designs for movement

# AutoTrack Airports

## Swept Path Analysis for Airside Vehicles

### The world's most advanced 3D swept path analysis tool

Analyse all aspects of all airside airport operations; check aircraft taxiing, stand clearances, pushback manoeuvres, jet blast safety zones and use the servicing point and door reports to plan support vehicle movements.

#### > Model aircraft & support vehicle manoeuvres

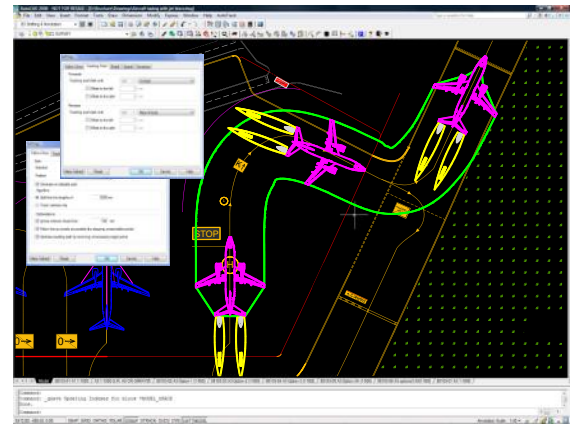
AutoTrack has not one, but five main drive modes ranging from the original point-and-click AutoDrive, through scripted, template and manual drive modes, to follow-a-line using Follow. There's even an option to place stationary vehicles.

#### > Pilot's eye, nosewheel or cockpit tracking

AutoTrack's Follow mode lets you to track aircraft along pavement taxiway markings using pilot's eye, nosewheel or cockpit. Use the advanced offset tracking point option to track the cut in point and maintain a fixed distance from kerbs and other features as you negotiate bends.

#### > AutoDrive with over-steer options

Model vehicle movements, including **pushback** manoeuvres, quickly and easily using **AutoDrive**. This point and click feature can generate smooth arc turns or more abrupt bearing turns. The overturn option allows side and/or exit over-steer turns. The entire turn including the overturns can be dynamically edited without redoing the manoeuvre.



Use Follow to track taxiway markings

#### > Powerful presentation options

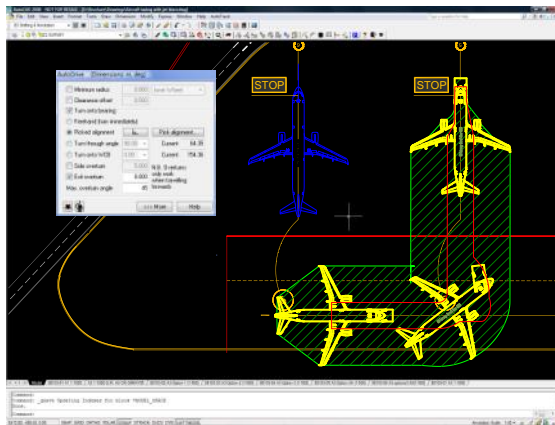
Present your simulations in one of the built-in formats or use the Report Wizard to create your own named format, choosing bodies, chassis or loads, enveloped, spaced or static, by colour, line type and line weight. Add graphs of steering and articulation angles or true scale side views of your vehicle. All path data can also be exported for analysis in other applications. Assess the effects of jet exhaust wake using the **jet exhaust velocity and temperature contours** report.

#### > Terminal servicing

Show passenger and cargo doors plus all **servicing points** (fuel, oil, hydraulics, water, electrics, lavatory, oxygen, catering & A/C) complete with proximity zones and typical servicing vehicle positions.

#### > Trace critical points

Use the **Tracking Report** to show the path of the nose-wheel during pushback or the engines or wingtips during taxiing per the ICAO guidelines.



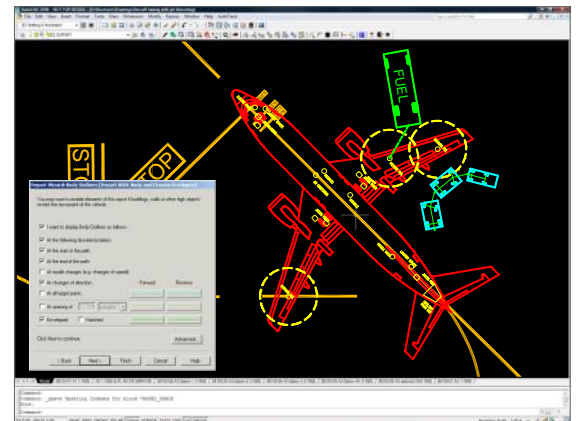
Check pushback manoeuvres using AutoDrive

#### > Speed sensitive algorithms

AutoTrack not only keeps steering within limits, it generates paths that include speed-sensitive transition curves at the entry and exit points to a turn. This critical feature applies to all AutoTrack drive modes and in both directions, unless explicitly over-ridden by the user.

#### > Make changes dynamically

**Dynamic Editing** allows changes to be made to the path alignments as the project develops, using the original settings and vehicle capabilities, without having to regenerate the entire path. To help you, configurable construction lines show existing target points, where model changes occur, the steering percentage and, importantly, when a turn is impossible.



Show servicing points with proximity zones



"...the best and most user friendly aircraft tracking software in the industry"

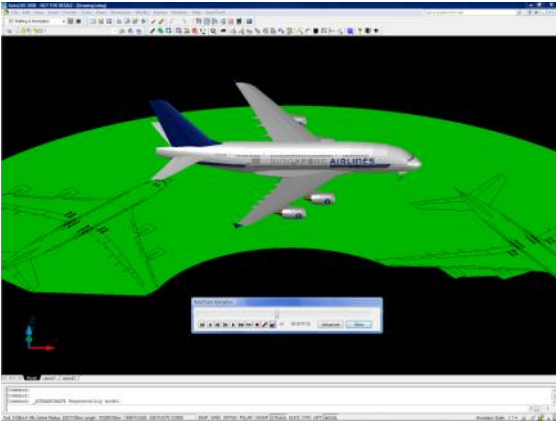
Hugo Hernandez  
Southwest Airlines

# AutoTrack Airports

Swept Path Analysis for Airside Vehicles

► **Advanced 2D & 3D animation**

Animating a manoeuvre provides so much greater insight than a static 2D image, especially for non-technical observers. Playback is in real time so it's easy to assess and plan stand activity and vehicle interactions.



Unique 3D animation tool for greater realism

AutoTrack is unique in allowing you to animate your paths in 3D. But the really cool part is that it works 'out of the box'; everything is automatic from the creation of the 3D vehicle shape to the viewpoint. (3D in AutoCAD only)

► **Multiple camera angles in 3D**

Set up and save multiple camera positions, including driver's eye views from different vehicles, and switch between them during playback.

► **Acceleration and deceleration in animation**

Whether you're working in 2D or 3D you can make your animations even more realistic by enabling acceleration and deceleration at all stops and starts or speed changes.

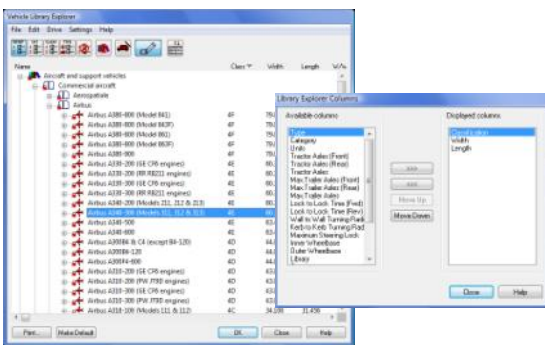
► **Movie file output**

When you're done creating your masterpiece save your animation direct to a standard AVI movie file. Over 150 aircraft are included, along with many aircraft tugs, passenger buses & stairs, baggage trains, emergency vehicles, fuel trucks, catering, hydraulic, lavatory, and other service vehicles.

► **Extensive library of aircraft & airside vehicles**

► **Library Explorer data sorting**

Find a suitable vehicle quickly with sortable data columns in the Library Explorer. Decide which data is relevant to you and display only those columns. It's even possible to compare vehicles in different libraries.



Sort and select features in Library Explorer

► **Vehicle Wizard & Advanced Vehicle Editor**

The Vehicle Wizard is one of two editors built into AutoTrack and allows you to edit or create aircraft or support vehicles. Simple models can be built or you can import the full body outline, including servicing points & vehicles, jet exhaust contours and more from AutoCAD drawing files .

► **Unparalleled vehicle modelling capabilities**

AutoTrack can model more complex vehicle types than any other system available. Amongst many advanced vehicle features, AutoTrack allows individual axle geometry no matter how many axles and any axle can be self-steered (partially or fully) or retracted. So you can even model the self steered main gear wheels of the Boeing 747. It is still the only program of its type to support steering linkages that vary with speed and articulation angle and it can even model dynamically variable steering linkages in which the secondary steering linkage ratio can be adjusted by the driver.

► **Easy to use**

The power of AutoTrack is matched only by its ease of use. The **Introduction Screen** and runtime **Tutor** guide new users through the program. The Skill Level settings let you to control how many prompts you see and automatically adjusts as you improve. And the multimedia tutorial shows common tasks being performed. Layer management, language detection, software updating, detection of drawing units and detection of driving convention are all automatic with manual overrides.

► **Compatible**

AutoTrack is supplied with versions for **AutoCAD 14 right up to 64-bit AutoCAD 2012** (including vertical derivatives), **MicroStation 95 to V8i**, **MicroStation Powerdraft v7.0 to V8i** and **MicroStation MX Roads XM and V8i**. If you don't have any of these system then there's a **stand-alone version** which can read and write DXF files, so you can use other CAD systems like **AutoCAD LT!** And don't worry if you use both AutoCAD and MicroStation, AutoTrack data is portable between all CAD systems.

► **Comprehensive**

As well as the airport related features, AutoTrack Airports operates seamlessly alongside the other programs in the AutoTrack range including Roads and Rail, allowing you to assess complex airport and highway transportation schemes using a single integrated system.

Available in:  
English  
US English  
French  
Spanish  
German  
Italian  
Portuguese

Autodesk  
Preferred Industry Partner  
AutoCAD® Civil 3D®



savoy  
computing

Savoy Computing  
Services Ltd  
Clermont House  
High Street  
Cranbrook  
Kent, TN17 3DN  
UK

T: +44(0)1580 720 011  
F: +44(0)1580 720 022  
E: sales@savoy.co.uk  
W: www.savoy.co.uk  
US: +1 866 527 3790

Autodesk  
Authorized Developer

